

State of Wyoming Corner Record

(In compliance with the CORNER PERPETUATION AND FILING ACT, Wyoming Statutes, 1977, Section 38-11-101, et, seq., and the Rules and Regulations of the Board of Registration for Professional Engineers and Professional Land Surveyors)

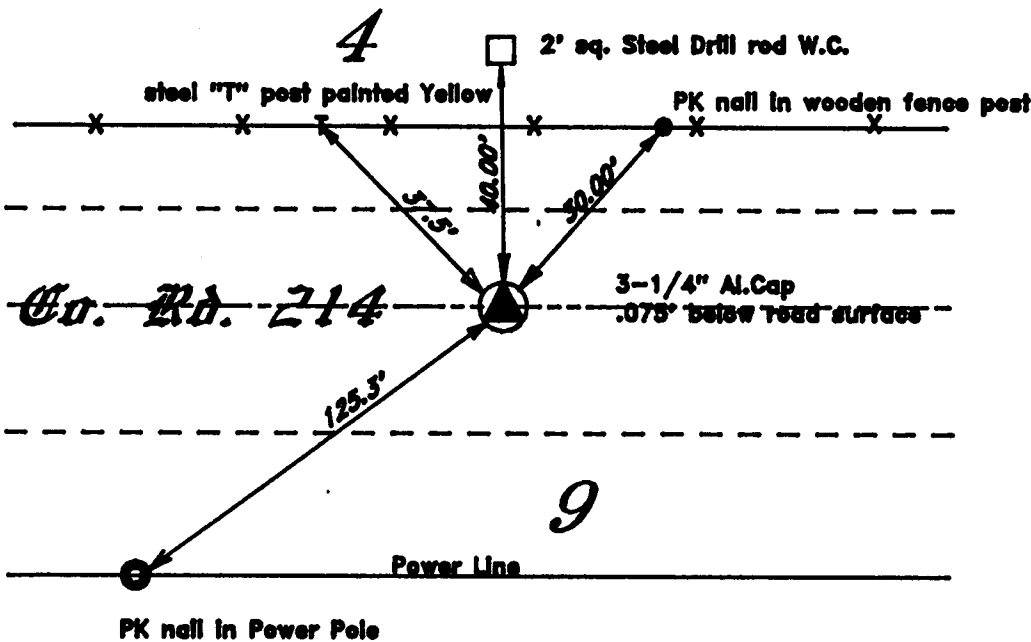
The Reverse side of this form may be used if more space is needed.

The record of the original survey and the citation of the source of historical information (if the corner is lost or obliterated) The description of the corner monumentation evidence as found and/or monument and accessories established to perpetuate the location of this corner. A sketch of the relative location of the monument, accessories, and reference points with course and distance to the adjacent corner(s) (if determined in this survey). The method and rationale for reestablishment of the lost or obliterated corner.

G.L.O.: East on a random line between Sec.4 & Sec.9, 40.00 set stone for Temp 1/4 corner, 79.50 intersected N & S line 18 links North of Sec. Corner 3/4/9&10 from which corner I run N 89°59' W on a true line between Sections 4&9 39.75 set a Red Sandstone 14"X8"X6" for 1/4 Sec. Cor.

Set 5/8"X36" rebar with 3-1/4" Aluminum Cap on a proportionate distance (mid point) between Sec. Cor. 4/5/8/9 and Sec. Cor. 3/4/9/10.
Searched diligently for corner of evidence of said corner to no avail.
Set 2"X2" Steel twist drill stock 30" long and marked "W.C. 40" at a point 40.00 feet North of the 1/4 corner monument.

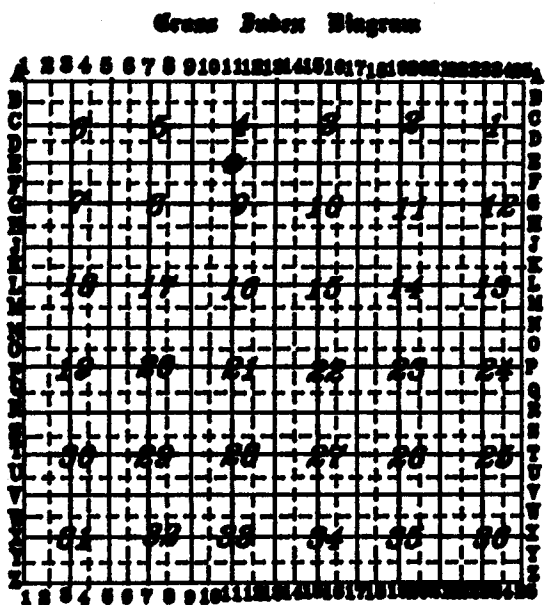
LARAMIE COUNTY CLERK
 CHEYENNE, WY.
 '97 SEP 29 PM 12 02
 210935



T. 14 N. R. 64 W.

Larry T. Perry L.S.
Gary N. Grigsby RIT

Date of Field Work: _____ Office References: _____



Sub No. _____
Terrestrial Surveying & Mapping Co.
 1187 Terry Ranch Road Cheyenne, Wyoming 82007
 Phone: (307) 634-8300
This corner record was prepared by me or under my direct supervision.
Seal and Signature

